

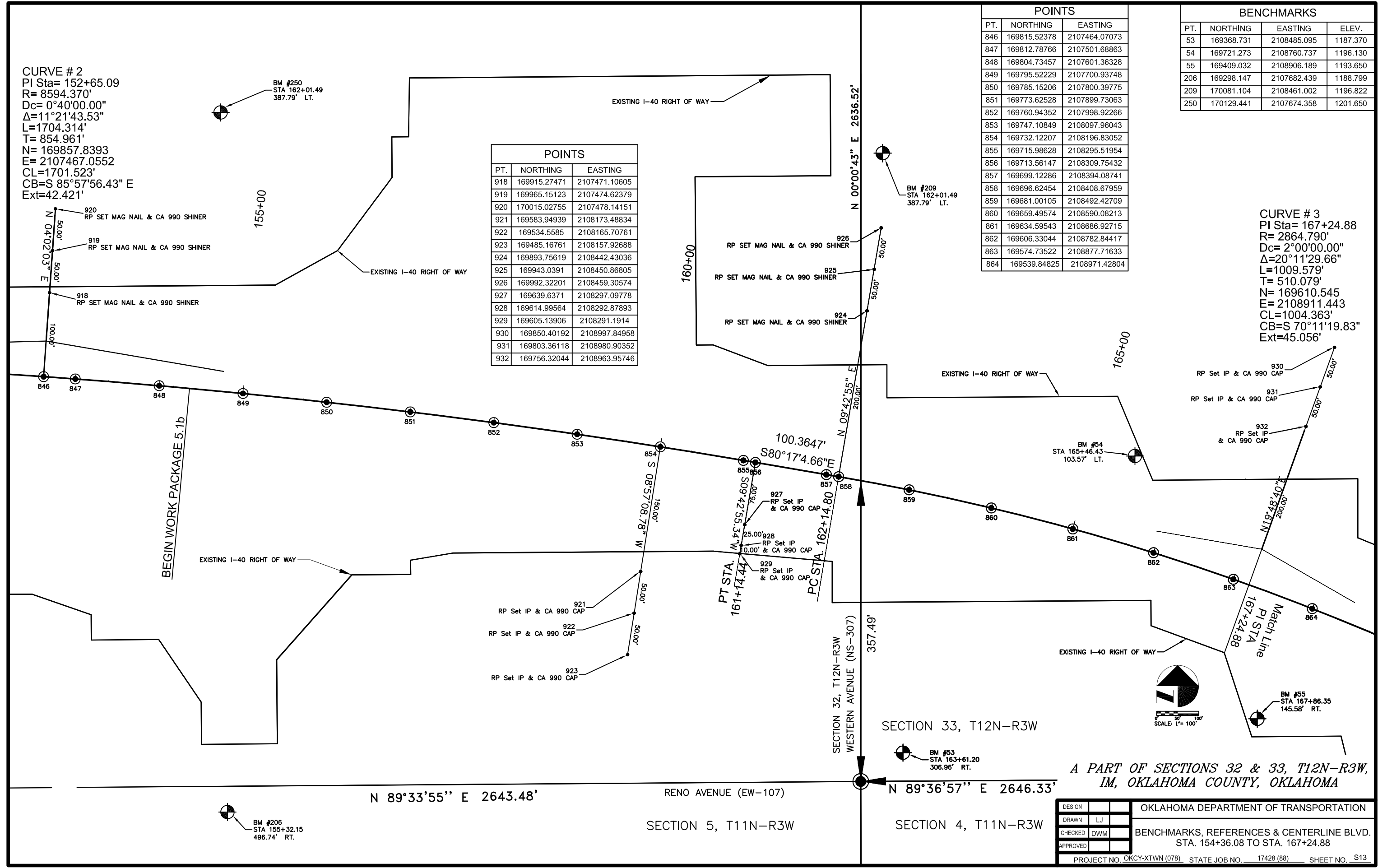
CURVE # 2  
 PI Sta= 152+65.09  
 R= 8594.370'  
 Dc= 0°40'00.00"  
 Δ=11°21'43.53"  
 L=1704.314'  
 T= 854.961'  
 N= 169857.8393  
 E= 2107467.0552  
 CL=1701.523'  
 CB=S 85°57'56.43" E  
 Ext=42.421'

POINTS		
PT.	NORTHING	EASTING
846	169815.52378	2107464.07073
847	169812.78766	2107501.68863
848	169804.73457	2107601.36328
849	169795.52229	2107700.93748
850	169785.15206	2107800.39775
851	169773.62528	2107899.73063
852	169760.94352	2107998.92266
853	169747.10849	2108097.96043
854	169732.12207	2108196.83052
855	169715.98628	2108295.51954
856	169713.56147	2108309.75432
857	169699.12286	2108394.08741
858	169696.62454	2108408.67959
859	169681.00105	2108492.42709
860	169659.49574	2108590.08213
861	169634.59543	2108686.92715
862	169606.33044	2108782.84417
863	169574.73522	2108877.71633
864	169539.84825	2108971.42804

BENCHMARKS			
PT.	NORTHING	EASTING	ELEV.
53	169368.731	2108485.095	1187.370
54	169721.273	2108760.737	1196.130
55	169409.032	2108906.189	1193.650
206	169298.147	2107682.439	1188.799
209	170081.104	2108461.002	1196.822
250	170129.441	2107674.358	1201.650

POINTS		
PT.	NORTHING	EASTING
918	169915.27471	2107471.10605
919	169965.15123	2107474.62379
920	170015.02755	2107478.14151
921	169583.94939	2108173.48834
922	169534.5585	2108165.70761
923	169485.16761	2108157.92688
924	169893.75619	2108442.43036
925	169943.0391	2108450.86805
926	169992.32201	2108459.30574
927	169639.6371	2108297.09778
928	169614.99564	2108292.87893
929	169605.13906	2108291.1914
930	169850.40192	2108997.84958
931	169803.36118	2108980.90352
932	169756.32044	2108963.95746

CURVE # 3  
 PI Sta= 167+24.88  
 R= 2864.790'  
 Dc= 2°00'00.00"  
 Δ=20°11'29.66"  
 L=1009.579'  
 T= 510.079'  
 N= 169610.545  
 E= 2108911.443  
 CL=1004.363'  
 CB=S 70°11'19.83"  
 Ext=45.056'



*A PART OF SECTIONS 32 & 33, T12N-R3W, IM, OKLAHOMA COUNTY, OKLAHOMA*

DESIGN		OKLAHOMA DEPARTMENT OF TRANSPORTATION
DRAWN	LJ	
CHECKED	DWM	
APPROVED		

BENCHMARKS, REFERENCES & CENTERLINE BLVD.  
 STA. 154+36.08 TO STA. 167+24.88

PROJECT NO. OKCY-XTWN (078) STATE JOB NO. 17428 (88) SHEET NO. S13